

Source Gazing:

Soul, Soul Group, and Beyond
Led by Peter Clark

Woodbury, Vermont

March 18-20, 2016

\$275 if paid in full by February 14,

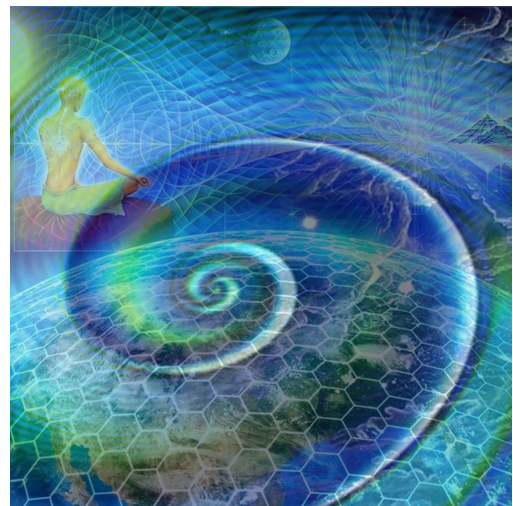
\$300 thereafter

To register, visit website, email

peterclark13@gmail.com or call 802-456-8735

This workshop is an investigation of Source – the creative force behind both ordinary and non-ordinary reality. With the assistance of our helping spirits, we look into the starting point of each creation, seeking to know something more about intention, appreciation, and manifestation. And we look *through* Source into the depths of reality, gazing at different aspects of all that is, including ourselves. The focus of our experiences will go from the broad cosmological to the very personal question of Soul.

Through this Great Mystery Source Lens, classic shamanic divination is practiced in a self reflective way beyond the bounds of a lifetime. We begin to study what our Souls are and the context of Their evolution both in and out of physical embodiment. Finally, a special healing technique for harmonizing multiple lives is taught based on the Source Gazing practice.



Pre-requisite: Strong journey abilities in the Upper and Lower worlds.



Peter is a life long teacher and explorer of reality. A practicing shamanic healer since 2005, Peter shares Shaman's Flame with Sarah Finlay. Sarah and Peter served as guest faculty for the Foundation for Shamanic Studies for two years and teach internationally.

www.shamansflame.com